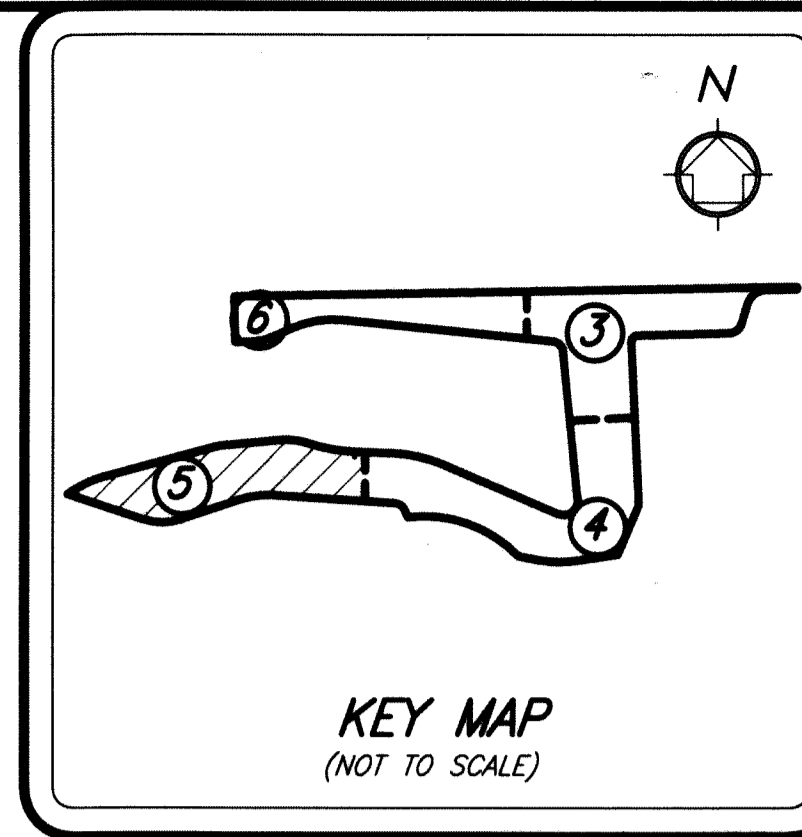


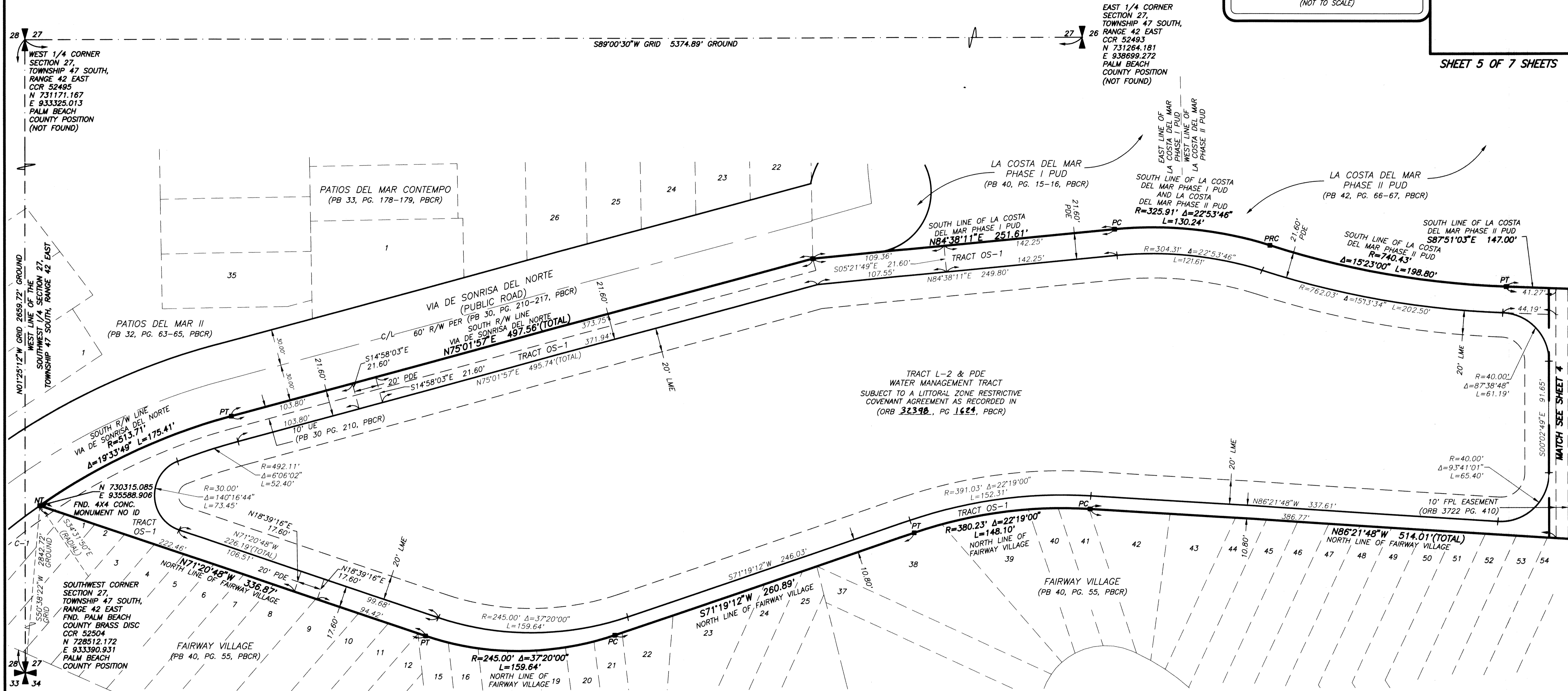
# BOCA DEL MAR PUD - BARRINGTON COVE AT MIZNER VILLAGE

BEING A REPLAT OF A PORTION OF TRACT 64 D, BOCA DEL MAR NO. 7 PUD, PLAT BOOK 30, PAGES 210 THROUGH 217 INCLUSIVE, OF THE PUBLIC RECORDS, PALM BEACH COUNTY, FLORIDA. LYING AND SITUATE IN SECTION 27, TOWNSHIP 47 SOUTH, RANGE 42 EAST, PALM BEACH COUNTY, FLORIDA.



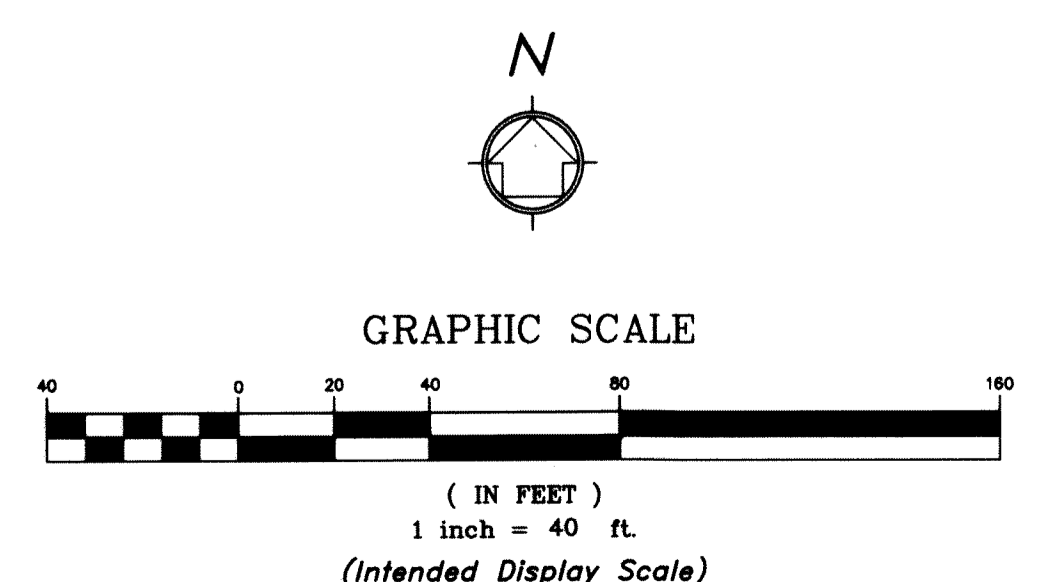
# 63

SHEET 5 OF 7 SHEETS



**LEGEND**

BE	= Buffer	⊙	= Permanent Control Point (PCP)
C/L	= Center Line	PBCR	= Palm Beach County Records
CCR	= Certified Corner Record	PDE	= Public Drainage Easement
CONC.	= Concrete	PC	= Page
CB	= Cord Bearing	PB	= Plat Book
CD	= Cord Distance	PRM	= Permanent Reference Monument
Δ	= Delta (Central Angle)	PUD	= Planned Unit Development
DE	= Drainage Easement	PT	= Point of Tangency
FPL	= Florida Power & Light	PC	= Point of Curvature
FND.	= Found	PRC	= Point of Reverse Curvature
LME	= Lake Maintenance Easement	PLS	= Professional Land Surveyor
LMAE	= Lake Maintenance Access Easement	R	= Radius
LWDD	= Lake Worth Drainage District	R/W	= Right-of-Way
L	= Length of Arc	RPB	= Road Plat Book
LB	= Licensed Business	(TYP.)	= Typical
NAD	= North American Datum	UE	= Utility Easement
NO.	= Number	■	= Set 4"x4" Concrete (PRM) W/Aluminum Disc Stamped "LB 7055 PRM" Unless Otherwise Noted
NT	= Non Tangent	●	= Set Nail & Brass Disc Stamped "LB 7055 PRM" Unless Otherwise Noted
(NR)	= Non Radial		
ORB	= Official Records Book		
OHE	= Maintenance and Roof Overhang Easement		



**NOTE:**  
 COORDINATES SHOWN ARE GRID COORDINATES  
 DATUM - NAD 83 (1990 ADJUSTMENT)  
 STATE PLANE FLORIDA EAST ZONE  
 TRANSVERSE MERCATOR PROJECTION  
 LINEAR UNIT = U.S. SURVEY FEET  
 ALL DISTANCES ARE GROUND  
 SCALE FACTOR = 1.000032176  
 PLAT BEARING = GRID BEARING  
 GROUND DISTANCE X SCALE FACTOR = GRID DISTANCE



2035 Vista Parkway, West Palm Beach, FL 33411  
 Phone No. 866.909.2220 www.wginc.com  
 Cert No. 6091 - LB No. 7055  
 THIS INSTRUMENT WAS PREPARED BY KELSEY M. SMITH,  
 P.S.M., PROFESSIONAL SURVEYOR AND MAPPER,  
 LICENSE NO. 7096 FOR THE FIRM: WGL, INC.